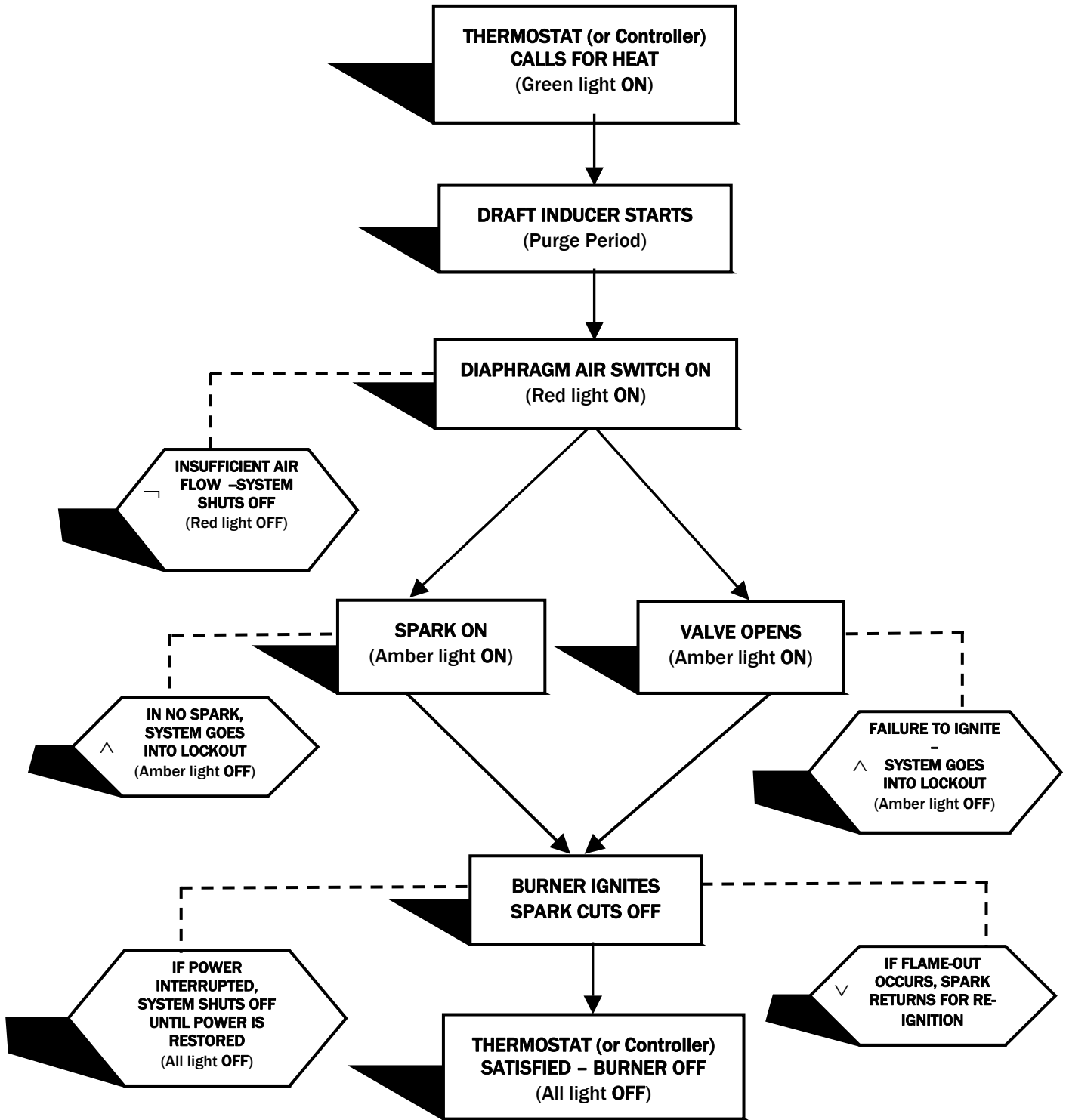


SEQUENCE OF OPERATION - TUBE HEATERS



ERROR -- HEXAGONS REPRESENT ACTIONS RESULTING FROM POSSIBLE MALFUNCTION.

⊣ -- INSUFFICIENT AIR FLOW INDICATES DEFECTIVE DRAFT INDUCER OR RESTRICTED FLUE

^ -- CORRECTIVE AND SYSTEM RESET NECESSARY

∨ -- IF BURNER DOES NOT RE-IGNITE, SYSTEM GOES INTO LOCKOUT. CORRECTION AND SYSTEM RESET IS NECESSARY.

* Green Light (#23022001) and Red Light (#23022002) are optional.