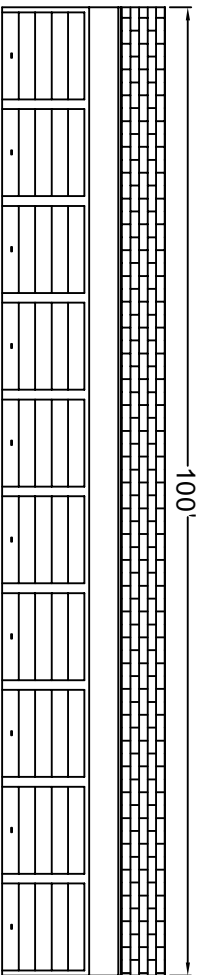
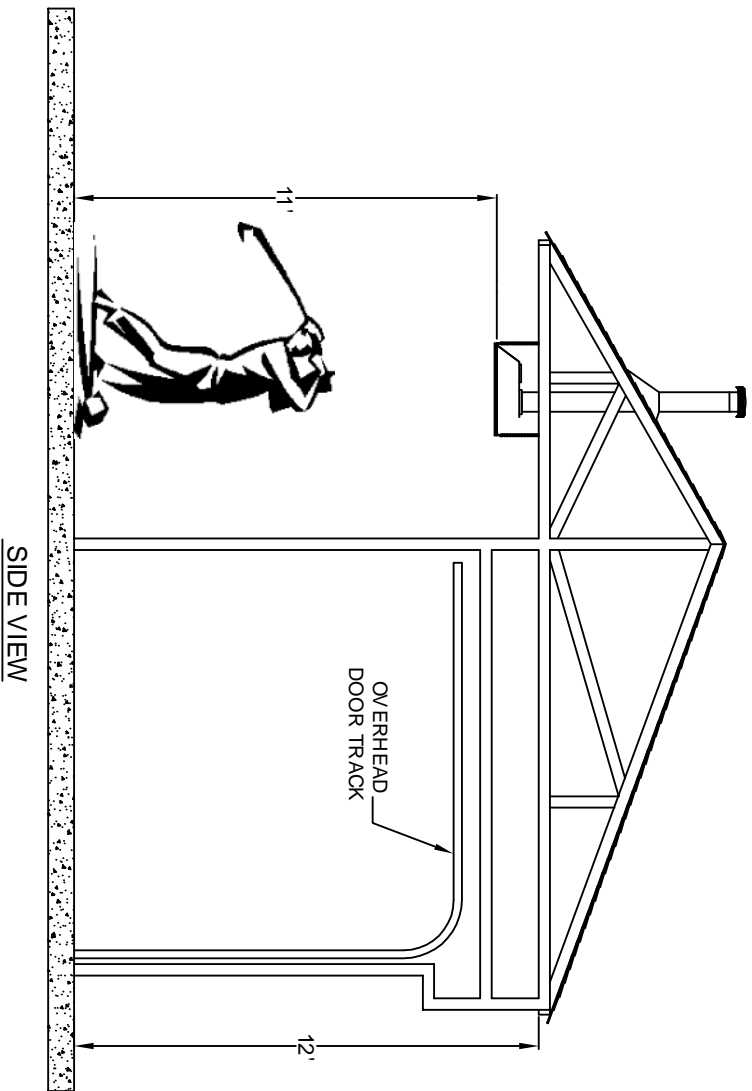


TOP VIEW



BACK VIEW



SIDE VIEW

12'

BACK VIEW

11'

**INFRARED HEATING REQUIREMENTS**

1. (G) LTU 130-30 VENTED SPACE-RAY INFRARED HEATERS. INSTALL AT 11 FEET ABOVE FINISHED FLOOR.
2. HEATERS SHALL BE "PULL THROUGH" SYSTEMS (VACUUM) WITH CAST IRON BURNER.
3. EMITTER TUBE SHALL BE CALORIZED FOR HIGH EMISSIVITY AND CORROSION RESISTANCE.
4. HEATERS SHALL UTILIZE SINGLE REFLECTOR DESIGN THAT WILL COVER THE FIRING AND EXHAUST LEG AS WELL AS ENTIRE U-BEND.
5. HEATER AND SPECIFIED CONTROL SYSTEM LOCATION SUBJECT TO FIELD VERIFICATION AND TO BE COORDINATED WITH OTHER EQUIPMENT IN THE BUILDING.
6. CONSULT HEATER SPECIFICATION SHEET AND I & O INSTRUCTIONS. FOR FURTHER INFORMATION PLEASE VISIT [WWW.SPACERAY.COM](http://WWW.SPACERAY.COM)

**SPACE-RAY**  
INFRARED GAS HEATERS

Title: **GOLF RANGE**  
**INSTALLATION DETAIL-1105**

Drawn By: **RJ Harrington** Date: **05 APR 06**